

A side view of a red Alameda County Fire Department E-6 engine. The truck is parked in front of a dark building. The side of the truck features the text "ALAMEDA COUNTY FIRE" and "ACF E-6". The word "PARAMEDIC" is visible on the rear side panel. The word "MEASURE X" is overlaid in large white letters across the center of the image.

# MEASURE X

**Station 7 Update**  
**01/30/2024**



Alameda County Fire Department  
*"Dedicated to superior service."*

# Fire Station 7 (Existing)

- Built in 1986
- Approx 2,800 sf
- Small by current standards
- Type I & Type III Engines
- Services urban wildlife interface, I-580 East to Dublin & west to Grove Way, Castro Valley



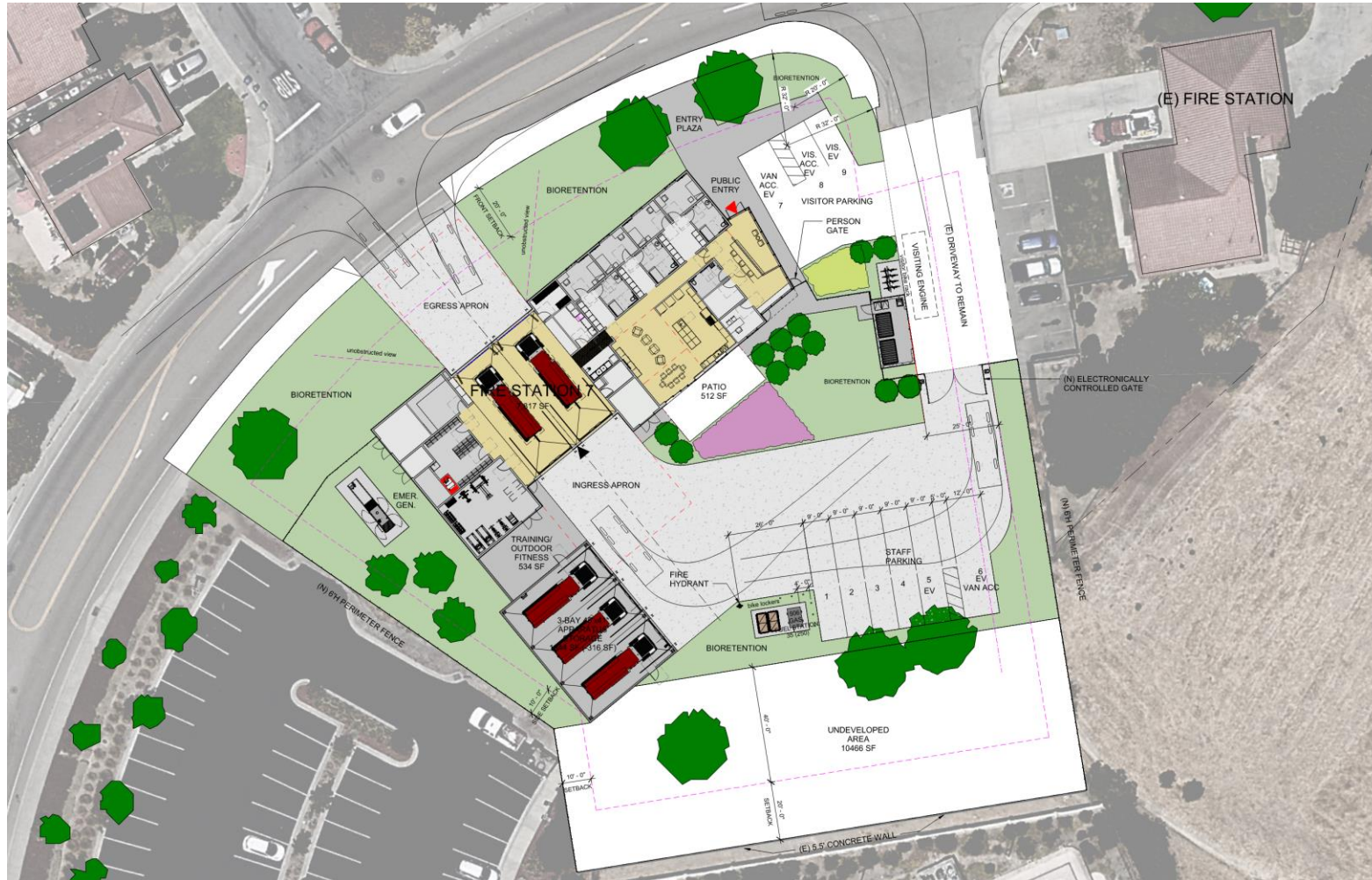


# Fire Station 7 (New)

- 6855 Villareal Dr
- Station is being built adjacent to existing fire station
- Will accommodate ACFDs current and future needs
- One story station



# Fire Station 7 (Preliminary Site Plan)



Alameda County Fire Department  
"Dedicated to superior service."



# Previous Feedback

- Flooding is a common at current site of Station 7's parking lot.
- Generator noise mitigation and security around backup emergency systems.
- Visual/audio notice given to drive thru traffic along Villareal when apparatus are exiting the bay onto the road (warning light or similar).
- Consider some minor improvements to the back of the lot that is currently designated as undeveloped.

# Fire Station 7 (Preliminary Floor Plan)



# Fire Station 7 (Preliminary Exterior Concept)



Alameda County Fire Department  
"Dedicated to superior service."



# Fire Station 7 (Preliminary Exterior Concept)



Alameda County Fire Department  
*"Dedicated to superior service."*



# Fire Station 7 (Preliminary Exterior Concept)



Alameda County Fire Department  
*"Dedicated to superior service."*



# Fire Station 7 (Preliminary Exterior Concept)



Alameda County Fire Department  
*"Dedicated to superior service."*



# Fire Station 7 (Preliminary Exterior Concept)



Alameda County Fire Department  
"Dedicated to superior service."

# Planned Next Steps

- Ongoing work:
  - Schematic designs will be further developed
  - CEQA documentation
  - Procure DBE services
- Target milestones:
  - Completion of “Bridging Documents”: May 2024
  - CEQA documentation submitted for review: May 2024
  - Proposals from Design-Builders: June 2024 – September 2024
  - Award contract to Design-Builder: October 2024
- On the Horizon:
  - Public art through Art Commission (<https://arts.acgov.org>)
- Next update: Quarter 2 - 2024





# Questions or Feedback?



Alameda County Fire Department  
*"Dedicated to superior service."*