

A photograph of a red Alameda County Fire Department E-6 engine. The truck is shown from the side, with its front cab and the rear section where the equipment is stored. The words "ALAMEDA COUNTY FIRE" are visible on the side of the cab, and "ACF E-6" is on the side of the equipment compartment. The word "PARAMEDIC" is written on the side of the rear section. The word "MEASURE X" is overlaid in large white letters across the center of the image.

MEASURE X

Architectural Design Update 12.06.2023



Alameda County Fire Department
"Dedicated to superior service."

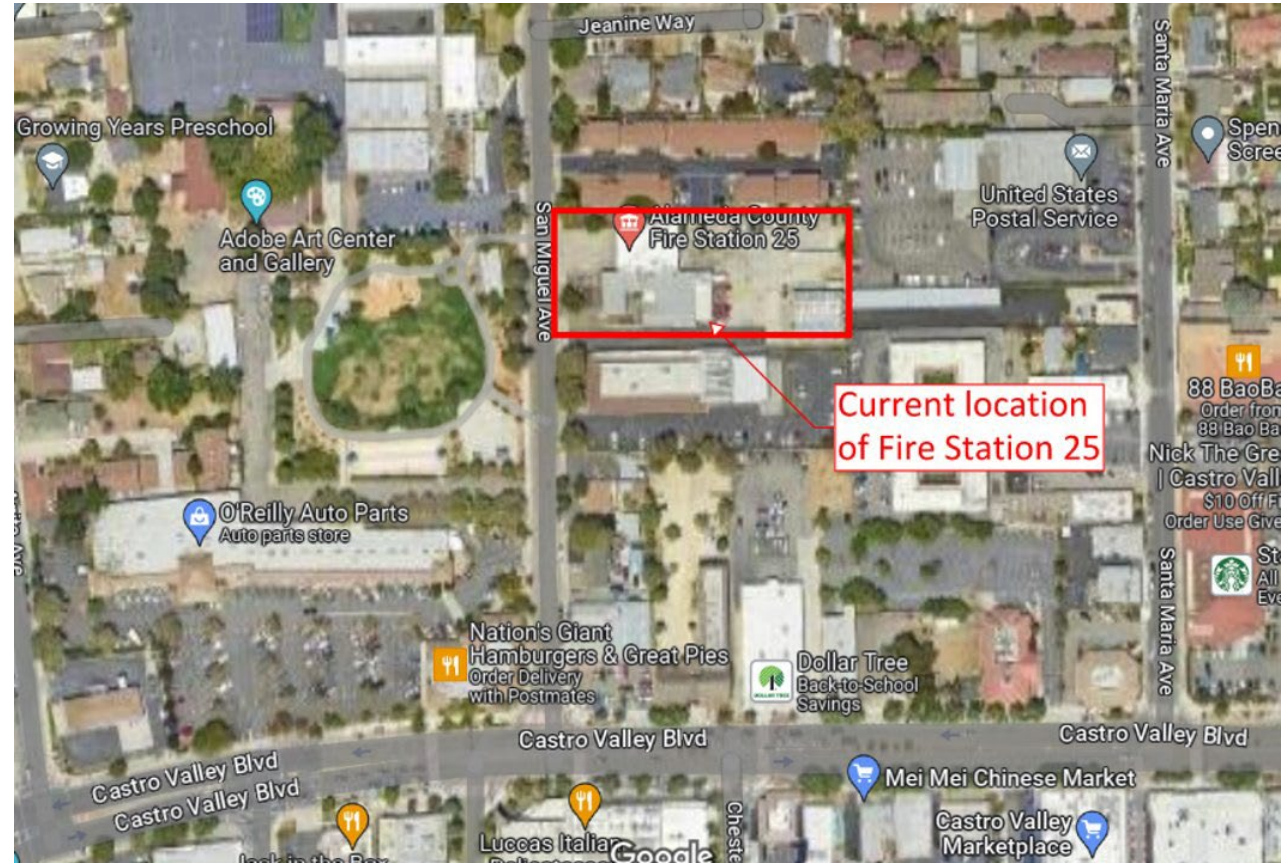
Fire Station 7

- New Fire Station 7 will be built on the lot immediately adjacent to the existing Station 7.
- Initial floor plan completed.
- Massing and schematics in progress.



Fire Station 25

- Fire Station 25 will be rebuilt on the same site.
- Initial floor plans are complete.
- Massing and schematics are in progress.



Alameda County Fire Department
"Dedicated to superior service."

mack⁵

RossDrulisCusenbery ARCHITECTURE

Fire Station 22

- Lot purchase is in escrow scheduled to close March 2024.
- Initial floor plan is completed.
- Massing and schematics are in progress.



Alameda County Fire Department
"Dedicated to superior service."

mack⁵

RossDrulisCusenbery ARCHITECTURE